



## How to use OpenSky™ SatSurf



**Revision: 1.00**

© 2005 MacroSat - Satellite Internet Services.

All right reserved.

<http://www.MacroSat.Com>

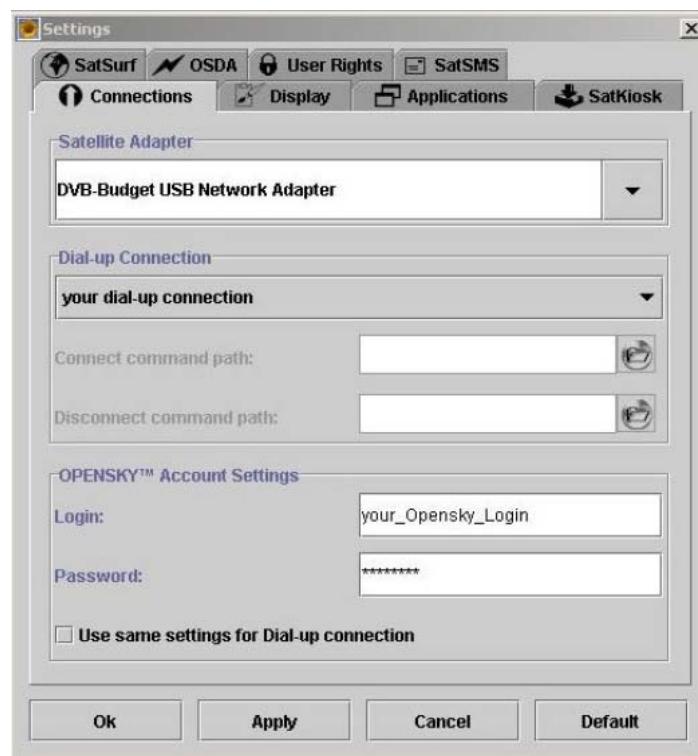
## 5.1 SatSurf



### Settings > Connections

Shows the Satellite Adapter and dial-up connection detected and chosen during OSWizard. You can select another dial-up connection by using the drop-down menu. These are the same dial-up connections you create as normal in Windows Network & Dial-up Connections.

OPENSKY™ has also remembered the account login and password you entered during OSWizard. Do not confuse your OPENSKY™ login password with your Dial-up connection login and password. Use the right one for the right service.



## Settings > SatSurf

If you have Internet Explorer, OPENSKY™ automatically sets the proxy settings as you login and logout. This setting is in the “SatSurf” tab. If you do not have IE or choose not to use Automatic Proxy Settings, you can set the proxies manually. The procedure is in the Appendix.

The default setting for Proxy no configuration warnings is unchecked.

You may find it useful to tick this during troubleshooting to see if an application is using the proxies correctly. For example, if it appears not to be using the satellite speed, it may not be using the right proxies.

### **SatSurf Login and Logout**

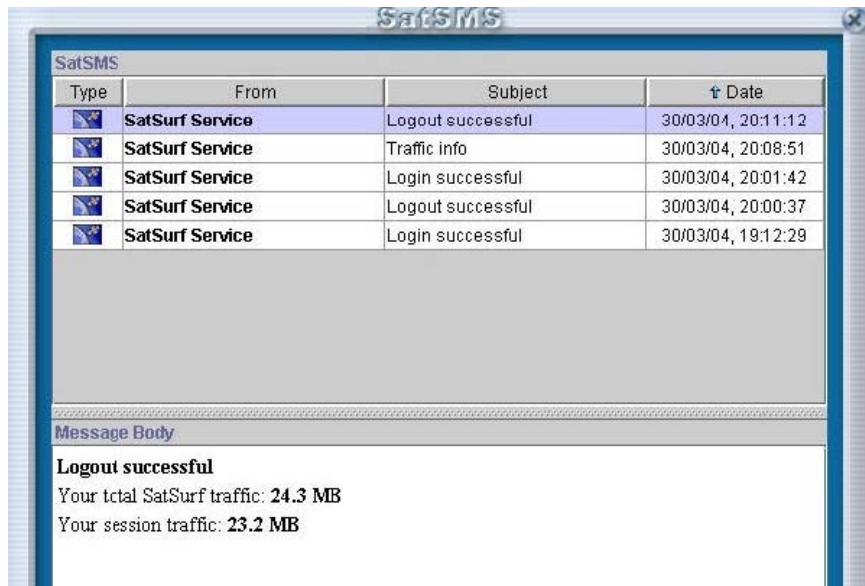
If your dial-up, Login and Password are set as described above, when you click on the SatSurf button, OPENSKY™ will dial-up and login for you.



As you can see, OpenSky has dialed, completed Login to SatSurf (Fast Internet), set the proxy and the transponder and then reported a successful Login.



You will also get a popup reporting Login and your monthly traffic to date. And the SatSMS panel receives messages from the system confirming your successful login, logout, time and traffic.



When you want to Logout, click on the SatSurf OPENSKY™ performs a Logout, resets the button. proxy, disconnects from your dial-up and

reports a successful Logout.



SatSurf



And, just like when you login, you will see a logout popup and a SatSMS message.

## SatSurf Speeds



You should notice a difference in everyday browsing – after all, you are now connected to a system which delivers up to 500kbit/s download speed (similar to domestic ADSL) on average and can burst over 1 Mbit/sec.

The actual speed achieved on any one site depends on a number of factors including how busy the site is, server performance, its connectivity to the backbone, how busy the internet is between you and the site and the number of people on our system.

You can see the speeds you are getting by using the built-in speedometer and speed graph.

Right-click on the Right-click again to switch to a Green is for Unicast traffic and OPENSKY™ logo in the graph over time. The small Orange is for Multicast. Dashboard to switch to the buttons top right of the graph speedometer. and speed change the scale Unicast is data you have

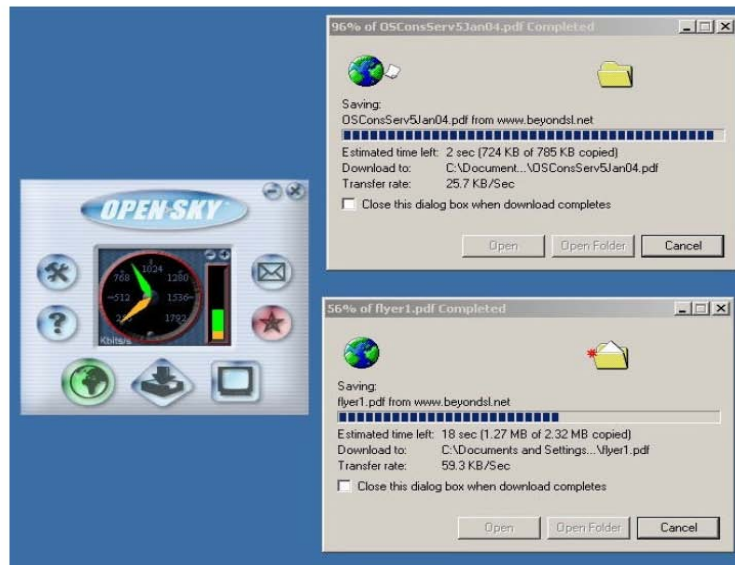
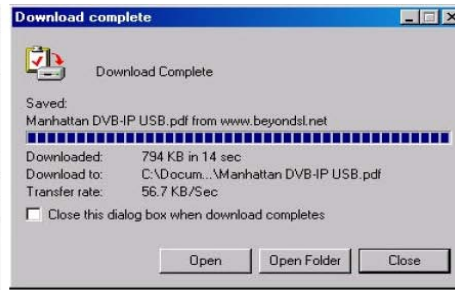
of the readout.



requested when logged on to SatSurf – your browsing, file downloads, emails etc. This uses your monthly allowance. Multicast is data broadcast by the system to all users: SatTV, SatKiosk, system updates and configurations. This does NOT count toward your monthly allowance.

Speeds vary throughout the day and depend on network loading, conditions on the internet and the load on the site you are visiting. However, download speeds should be typically around 40 to 80 KByte/s (320 kbit/s to 640kbit/s). Remember, this is not guaranteed in the "best efforts" tier.

kbit/sec	KByte/sec	Comment
16 - 32	2 - 4	typical modem speeds
56	7	maximum theoretical for a x2 modem with "perfect" phone connection
64	8	maximum ISDN
128	16	maximum dual ISDN
512	64	ADSL
320 - 640	40 - 80	typical Opensky
1,000 +	125 +	Opensky can burst to these speeds.



You can even download more than one file at the same time. If you open too many, you will run into the law of diminishing returns so experiment to find the method that suits you and your system best. Remember, your connection speed is only a measure of how fast your connection is. It is a maximum. Remember, too, that different protocols (http, ftp etc) have different amounts of overhead which means there is a difference between gross and net data rates. And different applications may report in net or gross and before or after error correction.

© 2005 MacroSat - Satellite Internet Services.  
 All right reserved.  
 MacroSat Support Team