



How to use OpenSky™ OSDA

OpenSky Direct Access



Revision: 1.00

© 2005 MacroSat - Satellite Internet Services.

All right reserved.

<http://www.MacroSat.Com>

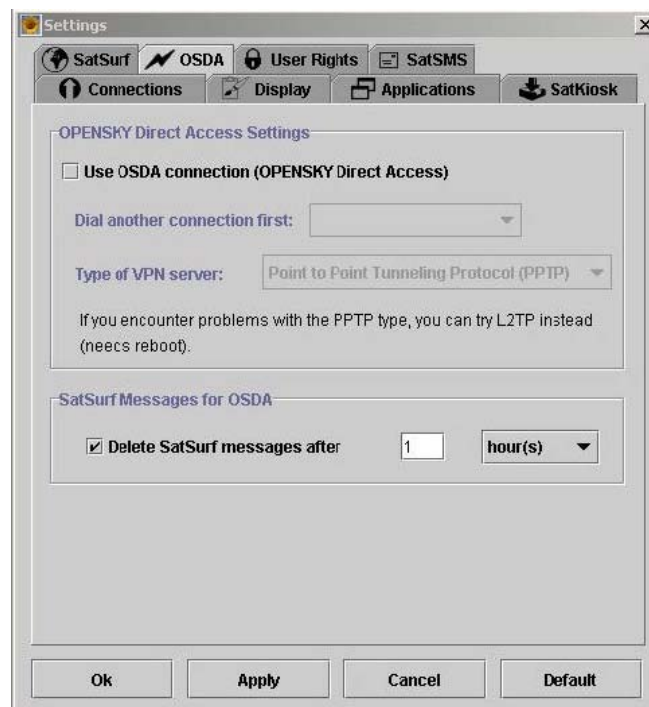
OSDA: OpenSky Direct Access

Settings > OSDA

OSDA allows an OpenSky user to establish a tunnel between his PC and the OpenSky platform. The tunnel is asymmetric, as the forward path (user > platform) is different to the return path (platform > user). Normally, all user traffic will be transported inside this tunnel.

With OSDA, most protocols will be automatically transported over satellite without the need for special proxy configurations. OSDA:

adds support for users assigned a private IP address from their ISP, or otherwise NAT-ted or PAT-ted by their ISP; simplifies the configurations required on the client side; enlarges the number of protocols & applications usable with OPENSKY™.



OSDA Hints and Tips

- OSDA is not yet formally supported. But you can use it at your own risk.
- It should be transparent to the type of connection (GPRS, ISP with proxy, LAN etc).
- We suggest you always use proxy/socks configuration with your browser.
- you can choose a Dial-up connection to dial first if you need to
- If you need to, try VPN PPTP first
- If this doesn't work, only then try VPN L2TP
- If you are not familiar with VPN, PPTP and L2TP, this facility will not be easily usable
- Once OSDA is correctly configured, you can start it simply by clicking the SatSurf icon.
- Your normal ISP email server will probably refuse to send emails. If so, please review the OSDA documentation for the solution.
- Download OSDA file from <http://www.macrosat.com/opensky/download/osda.zip>